



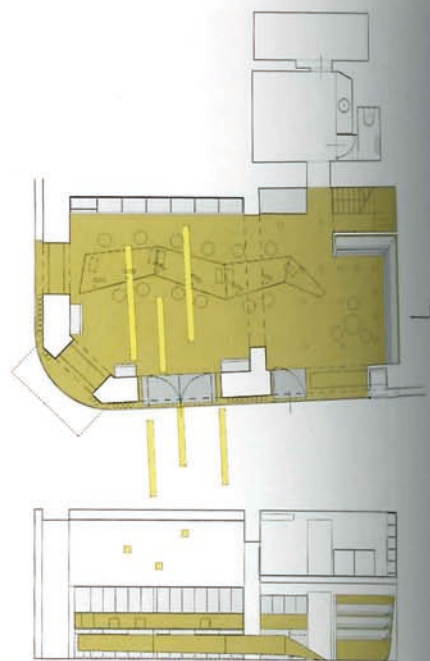
VERLAGSHAUS BRAUN

# 1000x

## EUROPEAN ARCHITECTURE



01

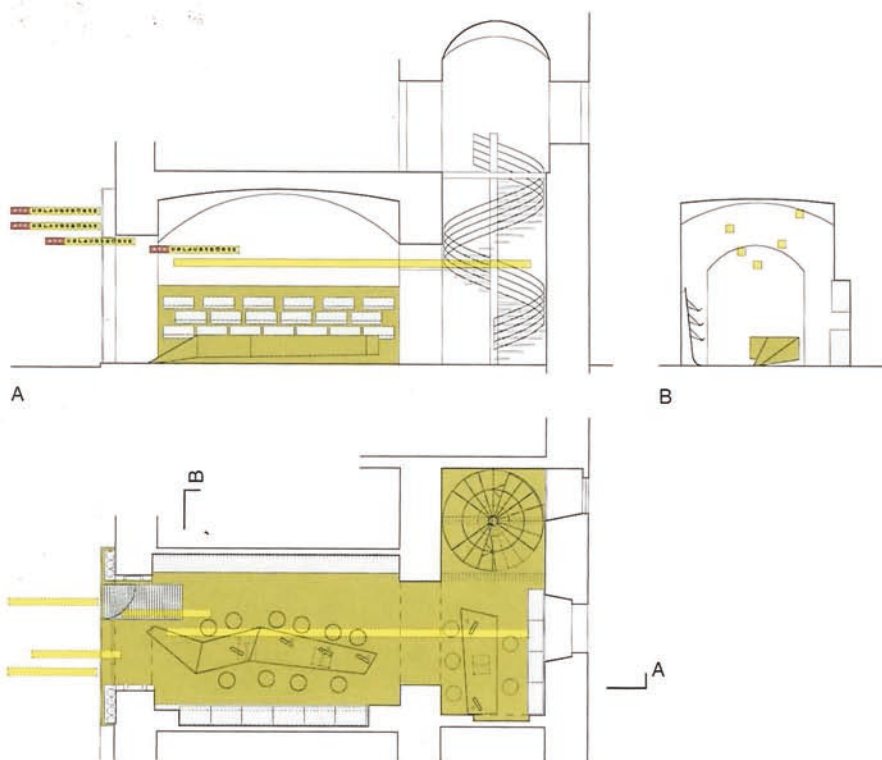


A

### ATS URLAUBSBÖRSE, 1030 WIEN + 1060 WIEN

These two travel agencies offer a dynamic ambience due to the color, the furniture and the lighting, which is integrated into the sign boards. The main color is a warm greenish yellow, an epoxy finish the floor and furniture are covered with. Due to its inverted profile the wall featuring the catalogs extends the floor into a vertical line, while the desks seem to be an extension of the floor. The thin sheet metal that supports the catalogs was bent so that the catalogs are displayed prominently and appear to hover in the air. As required for significant advertisement, some straight, long sign boards add dimension to the front of the store and end their dynamic motion in different spots in the interior. Their bright spotlights illuminate the room indirectly, and their stainless steel finish reflects the light.

01 Main view 02 Plan 03 Sections ground floor plan 04 Shop 05 Interior view 06 Street elevation at night



A

B

A

03



04



05



06